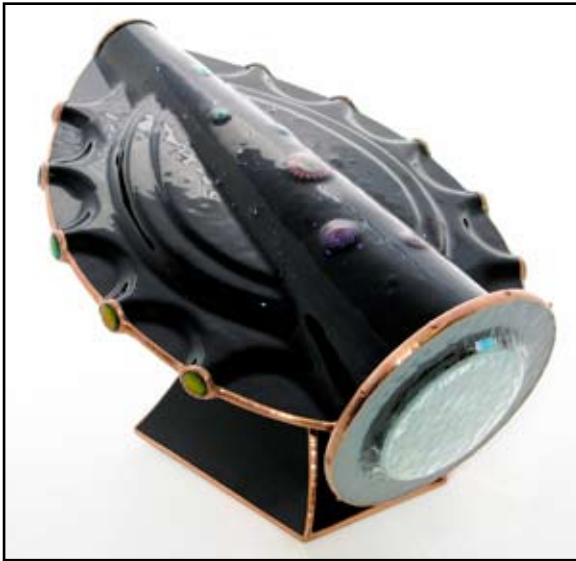


from the glass kaleidoscope studio of

Charles Karadimos

27325 Ridge Road • Damascus MD 20872 • 301-253-5789 • Karascopes@aol.com • www.Karascopes.com



100% Handmade

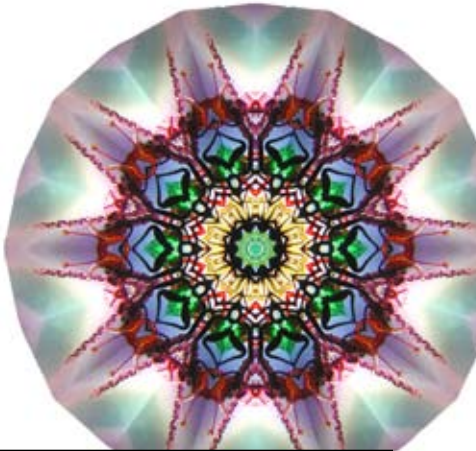
Charles works alone, making each part of every kaleidoscope by hand. There are no machined parts. Each kaleidoscope has its own unique personality, produced to meet the artist's high standards.



Expert Quality Craftsmanship

Charles, a self-taught artist, began working with glass in 1975, and has focused his attention on kaleidoscopes exclusively since 1979. Every piece is an original, signed, and numbered work of art.

His work is exhibited in museums, galleries, and private collections throughout the world. He is one of the Directors of the Brewster Kaleidoscope Society, an international organization of kaleidoscope enthusiasts.



Precision Optics

Charles is primarily concerned with creating a crisp, vibrant, interior image in each piece, exploring and developing mirror systems with crystal clear optics and perfect symmetry. This thoughtful attention to detail enables Charles to create beautifully intricate and detailed images that capture and hold the viewer's attention.

from the glass kaleidoscope studio of

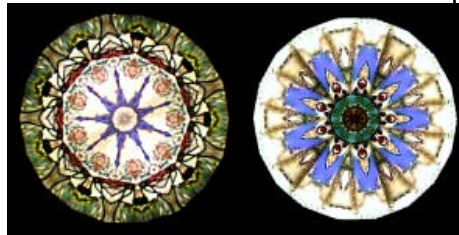
Charles Karadimos

27325 Ridge Road • Damascus MD 20872 • 301-253-5789 • Karascopes@aol.com • www.Karascopes.com



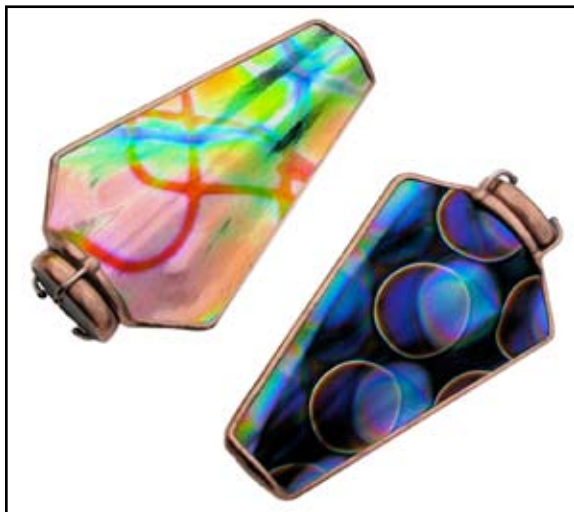
Classic Cone ▲

A well-balanced, hand-held scope that stands upright with built-in feet. A lens in the eyepiece enhances the superb two-mirror 12-point image. 10" tall. Available in many colors ... \$450



Luminosity ►

A cone-shaped, slumped glass body which has been back-painted, producing a soft pastel gradient effect. The object case is a combination of iridescent glass with selected surfaces ground off to produce a soft, pastel cast over and behind the 9-point image. (two-mirror system). 10" tall ... \$540



◀ Dichro Mini

This 4" mini scope is slumped, patterned, dichroic glass, with a treated dichroic object case filled with many hand selected and lampworked dichroic glass pieces. A two-mirror, 8 point system produces incredibly intricate and literally "glowing" images ... \$390

from the glass kaleidoscope studio of

Charles Karadimos

Ambiance

(The special atmosphere or mood created by a particular environment)

The exterior is slumped white glass with inserts of mouthblown, antique glass.

A tapered two-mirror system produces a large 10-point image.

The object case is specially treated to produce a soft, changing pastel background behind incredible, intricate, and infinitely random images.

10" tall ... \$650



from the glass kaleidoscope studio of

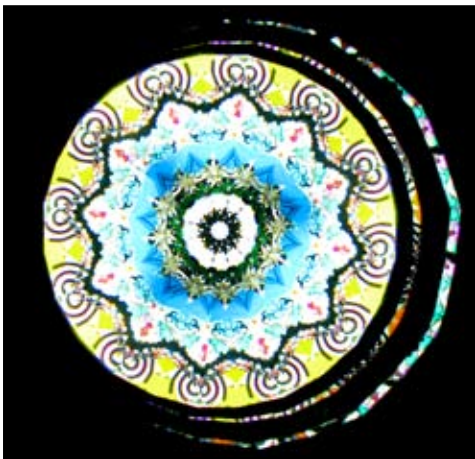
Charles Karadimos

27325 Ridge Road • Damascus MD 20872 • 301-253-5789 • Karascopes@aol.com • www.Karascopes.com

Spiral

The spiral is an ancient symbol of evolution. It represents the cycle of the seasons and the cycles of life, growth and change. Although each loop of the spiral brings us back to the same place, it takes us to a higher and more evolved level at each turn.

... The spiral represents the journey of life ...



The body of the scope is slumped glass with an embossed spiral design on both sides, available in either black or white. A tapered 2 mirror system, combined with a modified 3rd mirror, creates a large 12-point image, that suggests an interesting spiraling effect.

The dry object case has been sandblasted to provide a soft spiral background and contains lampworked glass, many of which are twisted to compliment the spiral theme.

This kaleidoscope stands 9.5" tall and is 4.5" wide.

"Spiral" is a limited, open edition ... \$660
(limited to the life of the mold used to slump the body)

from the glass kaleidoscope studio of

Charles Karadimos

27325 Ridge Road • Damascus MD 20872 • 301-253-5789 • Karascopes@aol.com • www.Karascopes.com

Color in Motion

This cone shaped kaleidoscope is multi color glass fused on white and then slumped. A tapered two mirror system producing perfect 8 point images.

The free turning, dry object cell contains fused and lampworked glass, and dry ampoules; all hand selected to coordinate with the exterior colors.

Color in Motion stands 10 inches tall.



\$880

from the glass kaleidoscope studio of

Charles Karadimos

27325 Ridge Road • Damascus MD 20872 • 301-253-5789 • Karascopes@aol.com • www.Karascopes.com

Dancing Color ...



Multi color glass fused on white (both sides) and slumped into a great feeling flask shape

Tapered two mirror system producing 10 point images

Free turning object cell contains fused and lampworked glass, dry ampules, all hand selected to coordinate with the exterior colors

10 inches tall

Object cell treated to enhance color

Each kaleidoscope is really one of a kind

\$960

from the glass kaleidoscope studio of

Charles Karadimos

27325 Ridge Road • Damascus MD 20872 • 301-253-5789 • Karascopes@aol.com • www.Karascopes.com



Mandala White : The sleek body of the scope fits nicely in one's hand. Unique mandalas are created from individual colorbars that are sliced, arranged, and fused to the white glass slumped body. A diagonal band of color is also fused to the body to accent the mandala design.

Mandala White has a tapered two-mirror, 10-point system. The dry object case is filled with a slice from the exterior mandala design, dry filled ampules and a variety of lampworked pieces. 10" tall x 4.5" wide
Edition of 20



Mandala Black : features the same sleek body and fused characteristics as "Mandala White," with the main body being black instead of white. The contrasting fused mandala design is very elegant and striking on this black body.

Mandala Black also has a tapered two-mirror, 10-point system, and the dry object case is filled with dry filled ampules and a variety of lampworked pieces, coordinated to the exterior fused design. 10" tall x 4.5" wide
Edition of 20

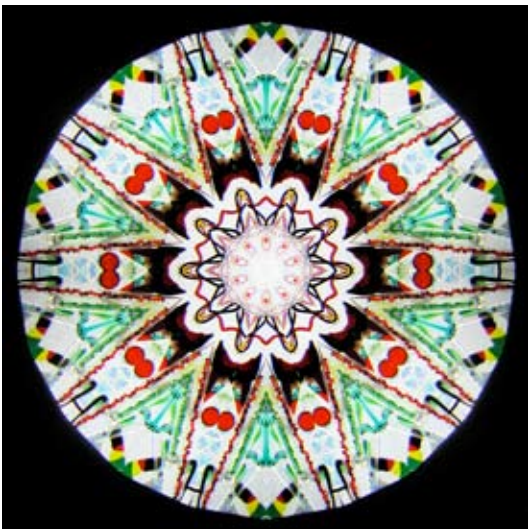
... \$950 each ...

See my website for availability

From the kaleidoscope studio of

Charles Karadimos

27325 Ridge Road • Damascus MD 20872 • 301-253-5789 • Karascopes@aol.com • www.Karascopes.com



Classic #12

The twelfth kaleidoscope in the “Classic Series” where the prime objective is to produce incredible and near perfect “classical” kaleidoscopic images. This large scope is 17” tall, slumped white glass, with 4 different fused mandala patterns on the body of the scope. A tapered 17” long, two-mirror system, produces 10-point images. The 5 inch object case is bearing mounted for very smooth operation and contains individually selected lampworked, fused, and dichroic coated glass pieces.

\$5,200



Presented the People’s Choice Award
at *Kaleidoscopes of the 21st Century*
at the Carnegie Visual and Performing Art Center
in Covington KY in May 2011.